

What are halftone dots?

Halftone is the reprographic technique that simulates continuous tone imagery through the use of dots, varying either in size, in shape or in spacing. "Halftone" can also be used to refer specifically to the image that is produced by this process.

Image #1

This is how a computer monitor represents a halftone. The solid smooth greys are very misleading.

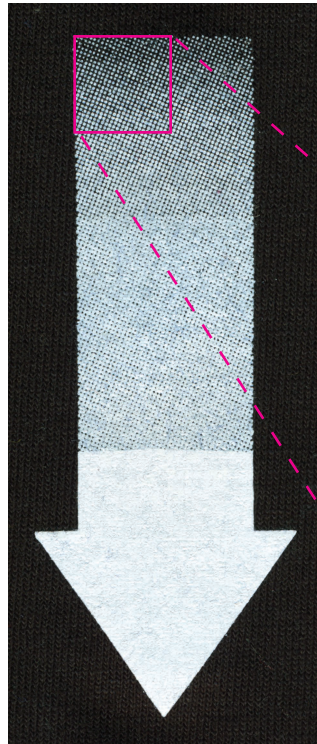
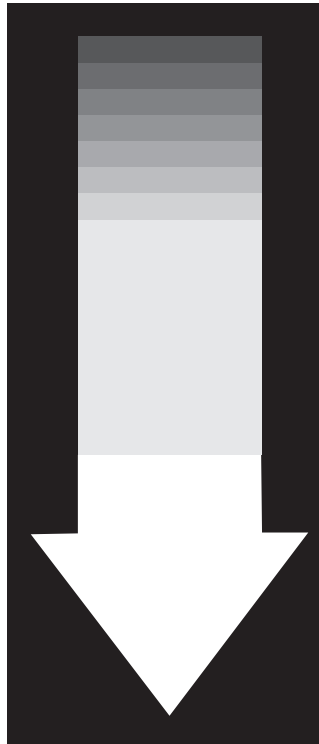


Image #2

Halftone prints are very different. Here is a scan of a halftone pattern at actual size.

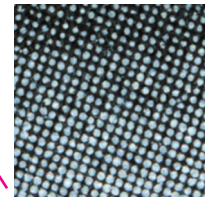


Image #3

A 200% zoom illustrates the reality of the dot pattern.

HALFTONE RESOLUTION

The resolution of a halftone screen is measured in lines per inch (lpi). This is the number of lines of dots in one inch, measured parallel with the screen's angle. Known as the screen ruling, the resolution of a screen is written either with the suffix lpi; for example, the halftone of the arrow above is 45lpi. Screen printing halftones range from 40lpi to 65lpi.

Image #4

Below is a scan of film with a 45lpi halftone pattern sample.

